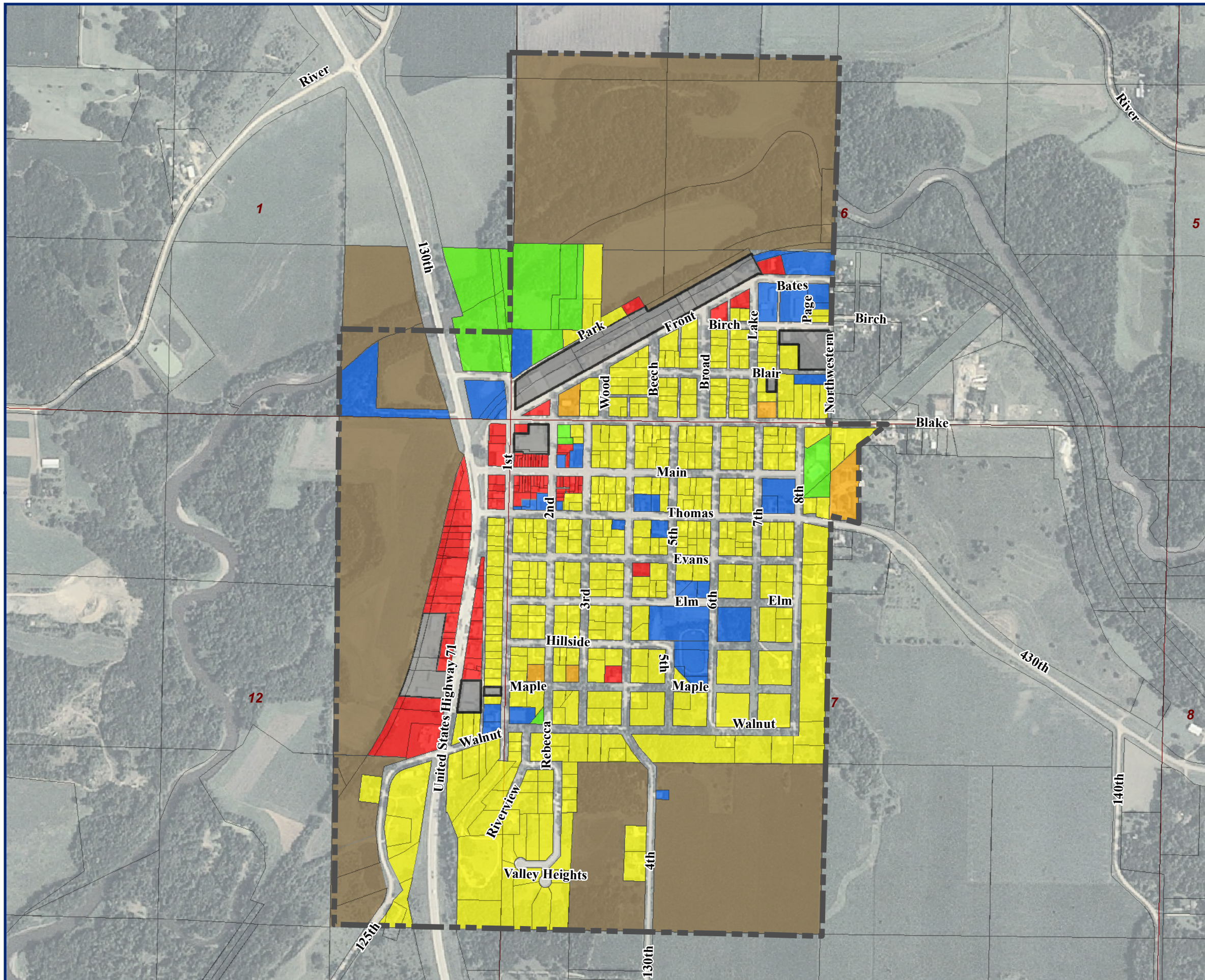










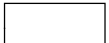
Sioux Rapids

Buena Vista County, Iowa

Figure 6: Existing Land Use Map



Legend

-  Agriculture
-  Single Family Residential
-  Multi Family Residential
-  Commercial
-  Industrial
-  Civic
-  Recreation
-  Corporate Limits
-  Parcels



0 100 200 400 600
Feet

Created By: J. Mohr / J. Sather
Date: Aug 2009
Software: ArcGIS 9.2
File: 1011PL1

This map was prepared using information from record drawings supplied by JEO and/or other applicable city, county, federal, or public or private entities. JEO does not guarantee the accuracy of this map or the information used to prepare this map. This is not a scaled plot.

